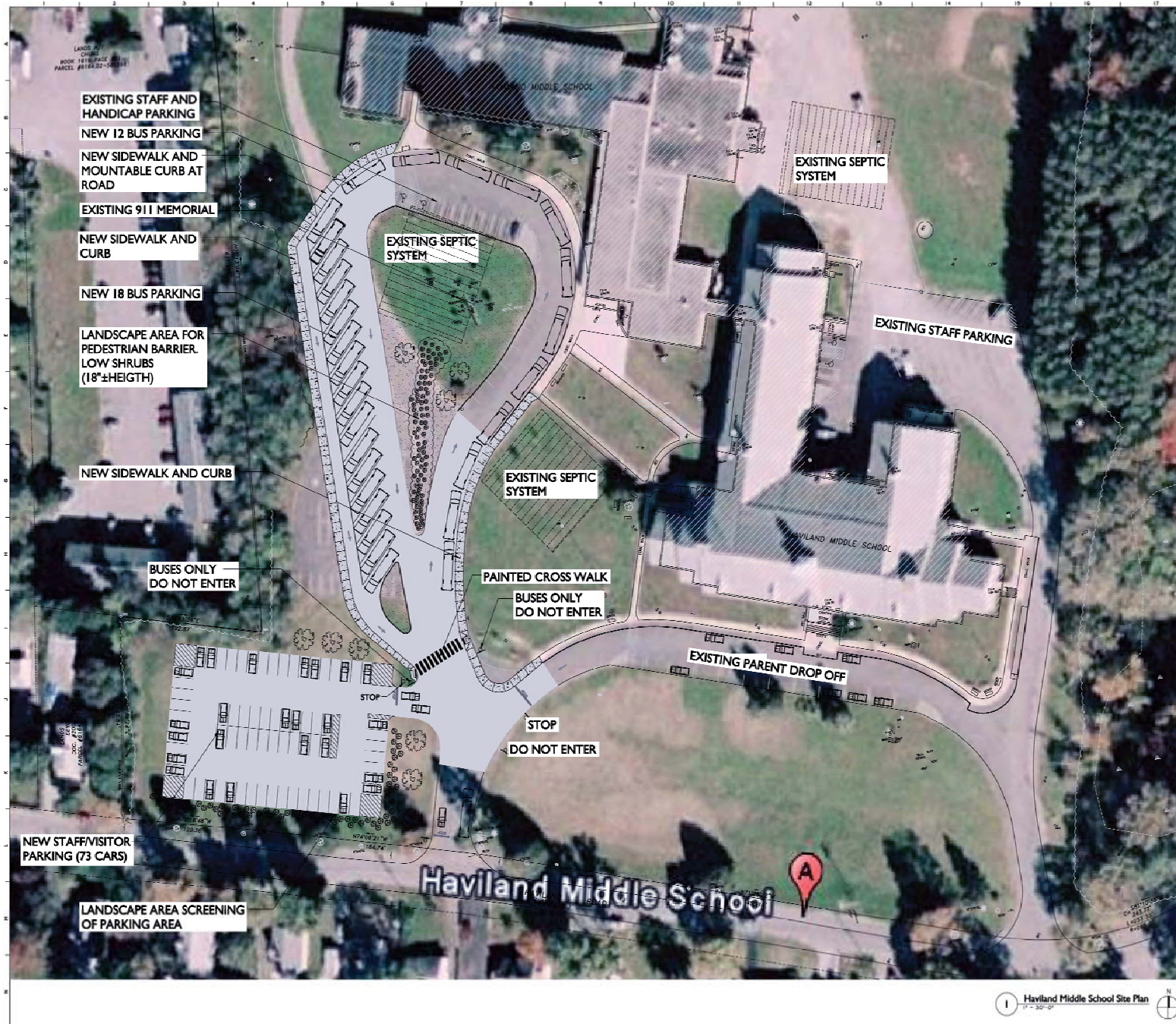


NEW DESIGN SK16

SK16: This design is similar to SK15. It substantially reduces the number of busses parked nose-to-tail. This design is within the available budget,

SK16



S.E.D. Control No. 13-08-01-06-0-001-018

11	10/21/19	Revised plan based on profile corrections
Rev. No.	Date	Description

Hyde Park Central School District

complex world
CLEAR SOLUTIONS

Tetra Tech Engineers, Architects
& Landscape Architects, P.C.



Hyde Park Central School District

Renovations to:
Haviland Middle School

Bus Loop Schematic
30 Buses
Utilizing Existing Bus Loop

Drawn by JES	Date 08.13.19	Drawing No. 08060-09001
-----------------	------------------	----------------------------

SK-16

Rendering 16

Pros

- **No aesthetic change, maintains the current front curve and lawn in its entirety.**
- **No affects on septic fields or 911 memorial**
- Multiple outside door access reduces student congestion upon entering / exiting building
- Assigned permanent bus spaces, accommodates late arrivals
- Modified nose to tail line up (partial)
- Aligns district for future improvements/ growth
- **In Prop III budget**

Cons

- Parent traffic exit shared with bus traffic
- Handicapped parking in loop / limited access during arrival and dismissal